

Retractable Banner Assembly/Disassembly Care Instructions



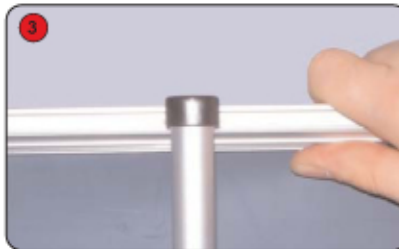
Kit includes:
base, bungee pole set and
carry bag



Assemble the bungee pole and insert
into the base.



Lean the bannerstand backwards
and extend the banner by lifting the
top rail until the complete image
is visible.



Finally secure the banner by locating
the top rail cup over the pole.



Important!

When pulling out the graphic
or putting back into the base,
PULL IT OUT/LOWER IT SLOWLY
making sure the **image is centered** and
not rubbing the sides of the unit.

When taking down, reverse the steps and lower the
graphic banner, **SLOWLY and CENTERED**.